

# Hydraulic Lake Bike Trail

Big White Mountain, BC

---

<b>Distance:</b>	12.3km (24.6km round trip)	<b>Ascent/Descent:</b>	176m/206m
<b>Duration:</b>	1 hour (E-Bike)	<b>Trail Type:</b>	Out and Back
<b>Difficulty:</b>	Moderate	<b>Best Season:</b>	Summer

**ATTENTION** Trail conditions and difficulty levels can change without notice. Use this information at your own risk. Always check current weather, carry appropriate gear, and exercise personal judgment. Stay on marked paths and respect local regulations.

## Trail Description

---

Hydraulic Lake Trail begins from across from the Okanagan Observatory along Big White Rd. This trail follows Okanagan Falls FSR, a beautiful mountain pass with pleasant views. Continue along Okanagan Falls FSR before crossing highway 33. Take a right onto McColloch Rd. and follow it until you reach Hydraulic Lake. Hydraulic Lake has many beautiful campsites and is stocked with Rainbow Trout every year to make for the perfect fishing spot. REFER TO BACK OF PAGE FOR DETAILED MAP. SCAN QR CODE ON BACK OF PAGE FOR GPS MAP (GOOGLE MAPS).

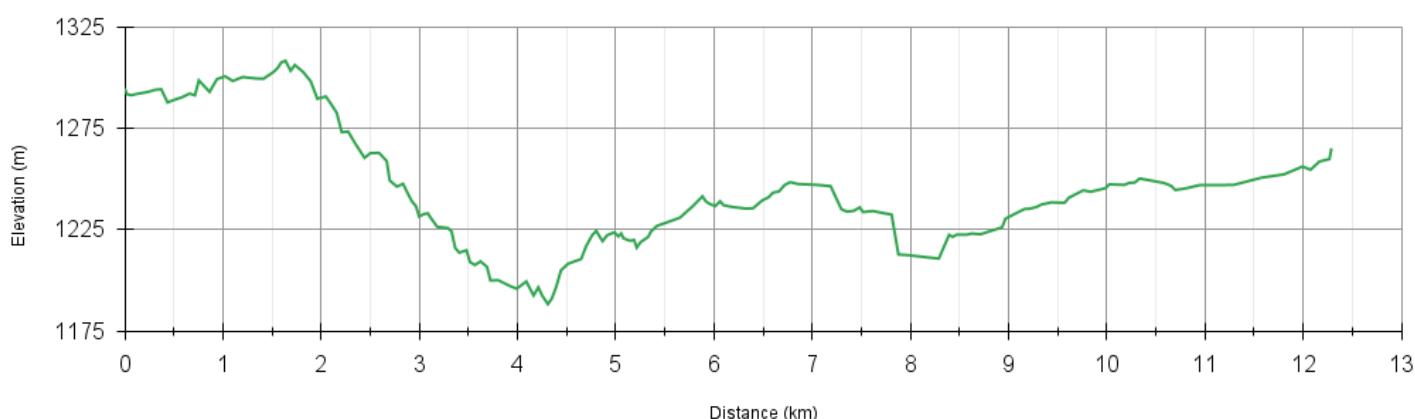
## Recommended Gear

---

- 2+ Litres of water per person
- Snacks: granola bars, etc.
- GPS Map (google maps)
- Compass
- Spare Battery (if E-Biking)
- Sturdy Footwear
- Bear Spray
- Weather appropriate clothing
- Sunscreen
- First Aid Kit

## Elevation Map

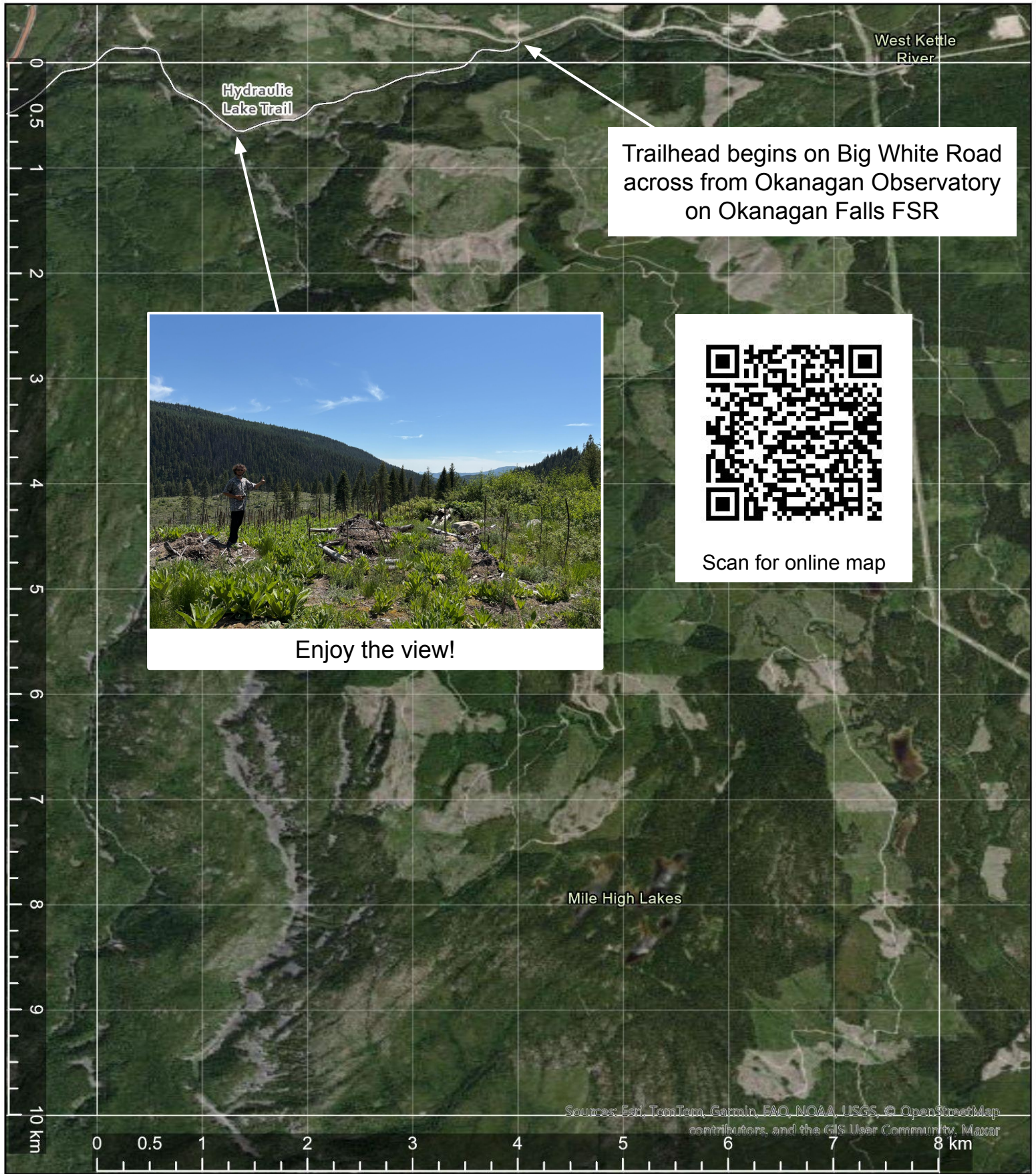
---



For questions and concerns please reach out to [trailorparkboysca@gmail.com](mailto:trailorparkboysca@gmail.com)

Google Maps Link: (Or scan QR Code on next page)

<https://www.google.com/maps/d/u/1/edit?mid=19ni1fY3C3YK2nXxiZlx1cTN0Rk4l33M&usp=sharing>



Trailhead begins on Big White Road  
across from Okanagan Observatory  
on Okanagan Falls FSR



Enjoy the view!



Scan for online map





